

These slides are for use with

Database Systems

Concepts, Languages and Architectures

Paolo Atzeni • Stefano Ceri • Stefano Paraboschi • Riccardo Torlone
© McGraw-Hill 1999

Concepts,
Languages
and
Architectures

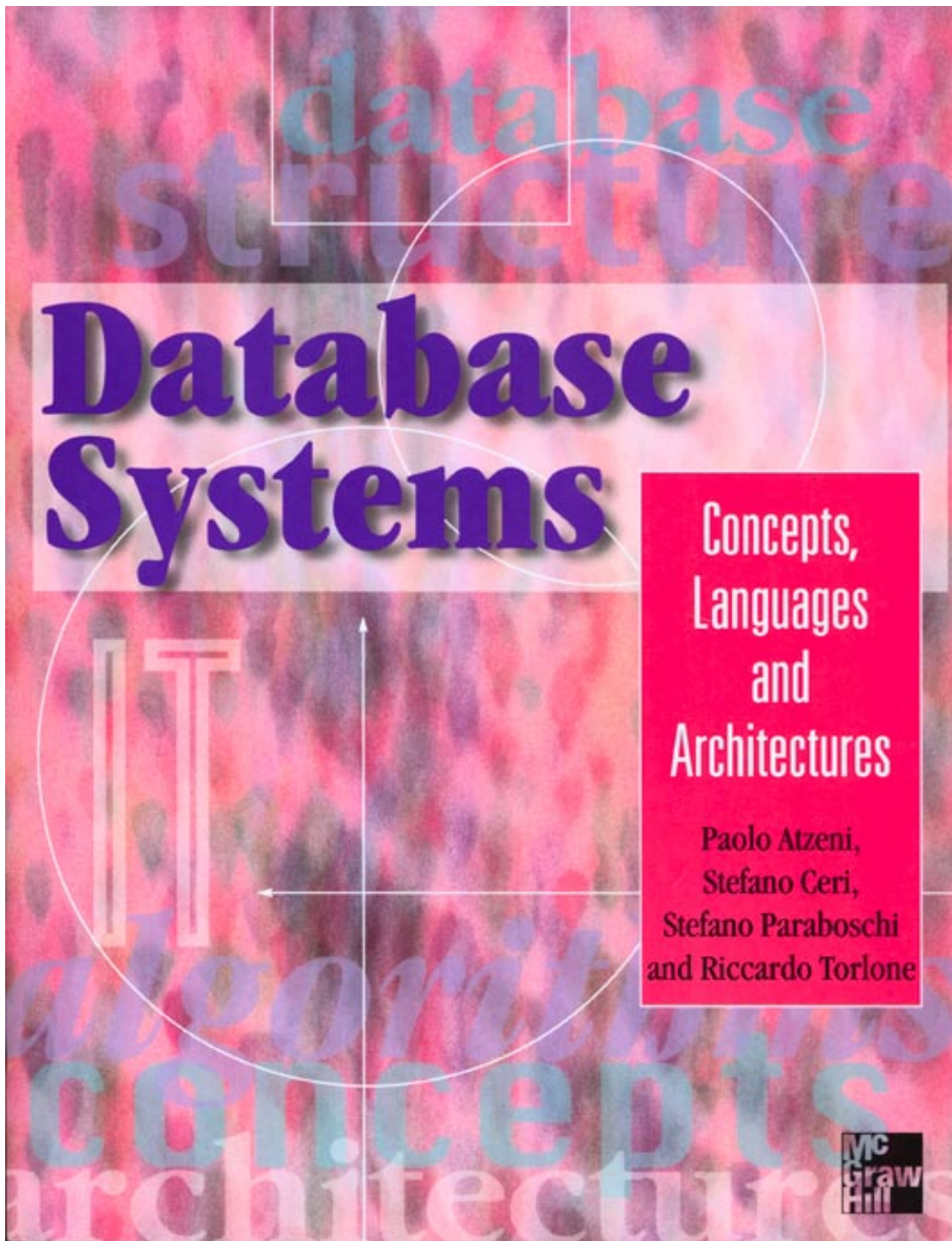
Paolo Atzeni,
Stefano Ceri,
Stefano Paraboschi
and Riccardo Torlone

Mc
Graw
Hill

To view these slides on-screen or with a projector use the arrow keys to move to the next or previous slide. The return or enter key will also take you to the next slide. Note you can press the 'escape' key to reveal the menu bar and then use the standard Acrobat controls — including the magnifying glass to zoom in on details.

To print these slides on acetates for projection use the escape key to reveal the menu and choose 'print' from the 'file' menu. If the slides are too large for your printer then select 'shrink to fit' in the print dialogue box.

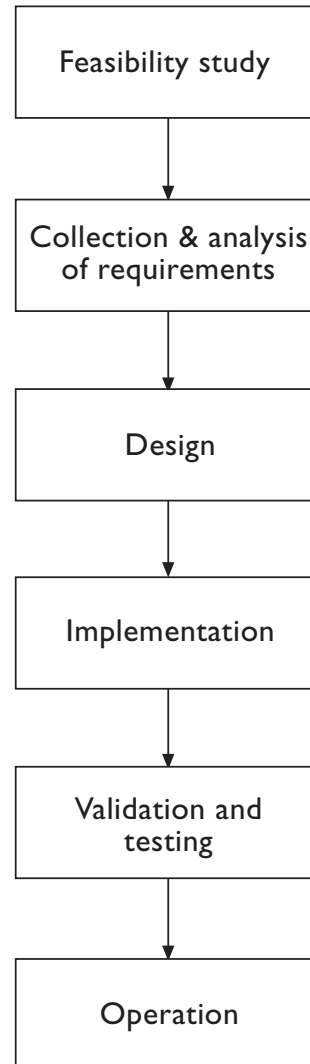
Press the 'return' or 'enter' key to continue . . .



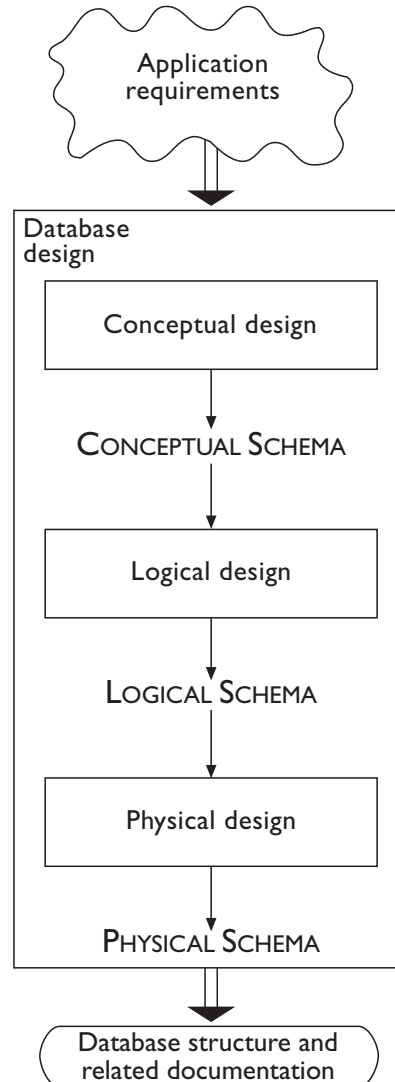
Chapter 5

Design techniques and models

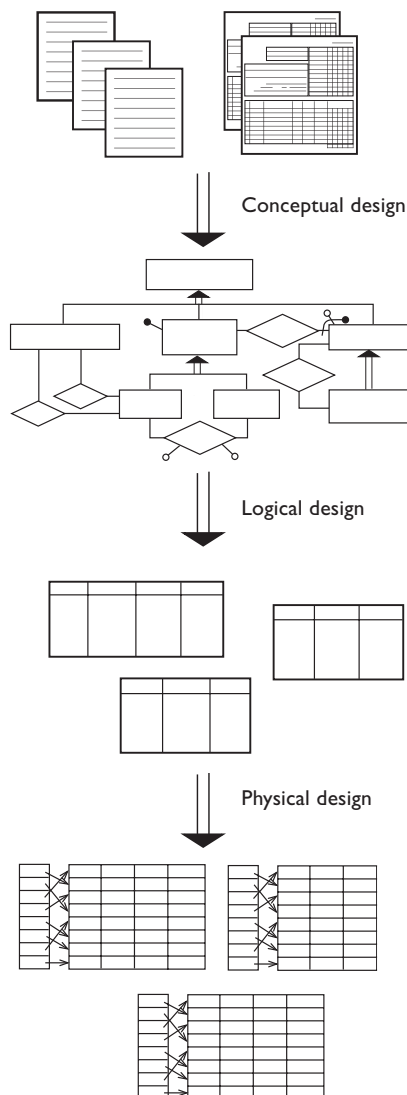
Life cycle of an information system



The phases of database design



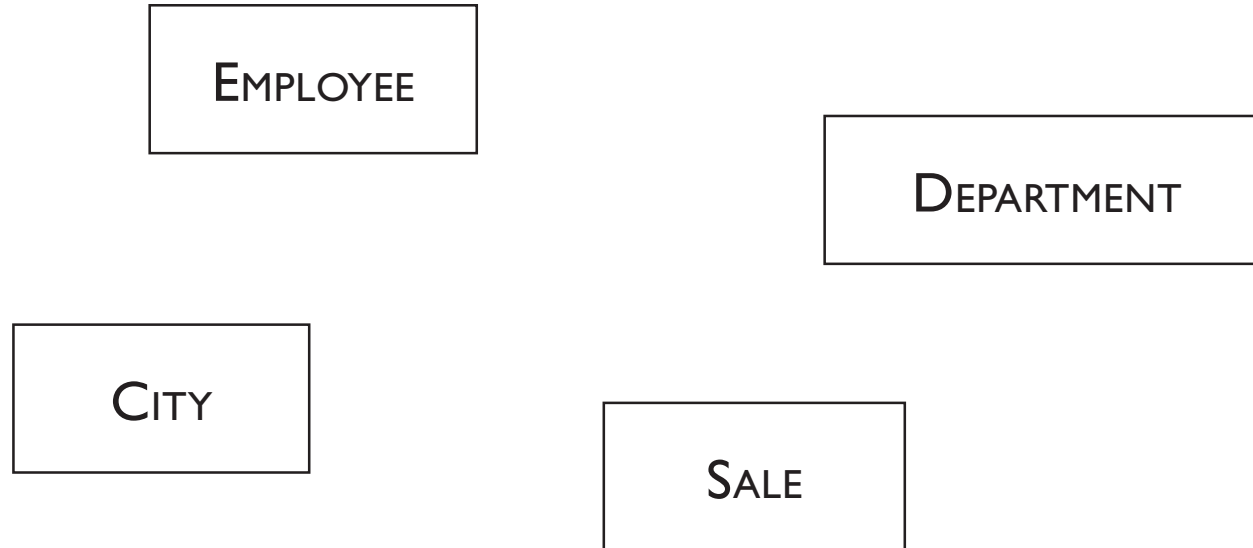
The products of the various phases of a relational database with the E-R model



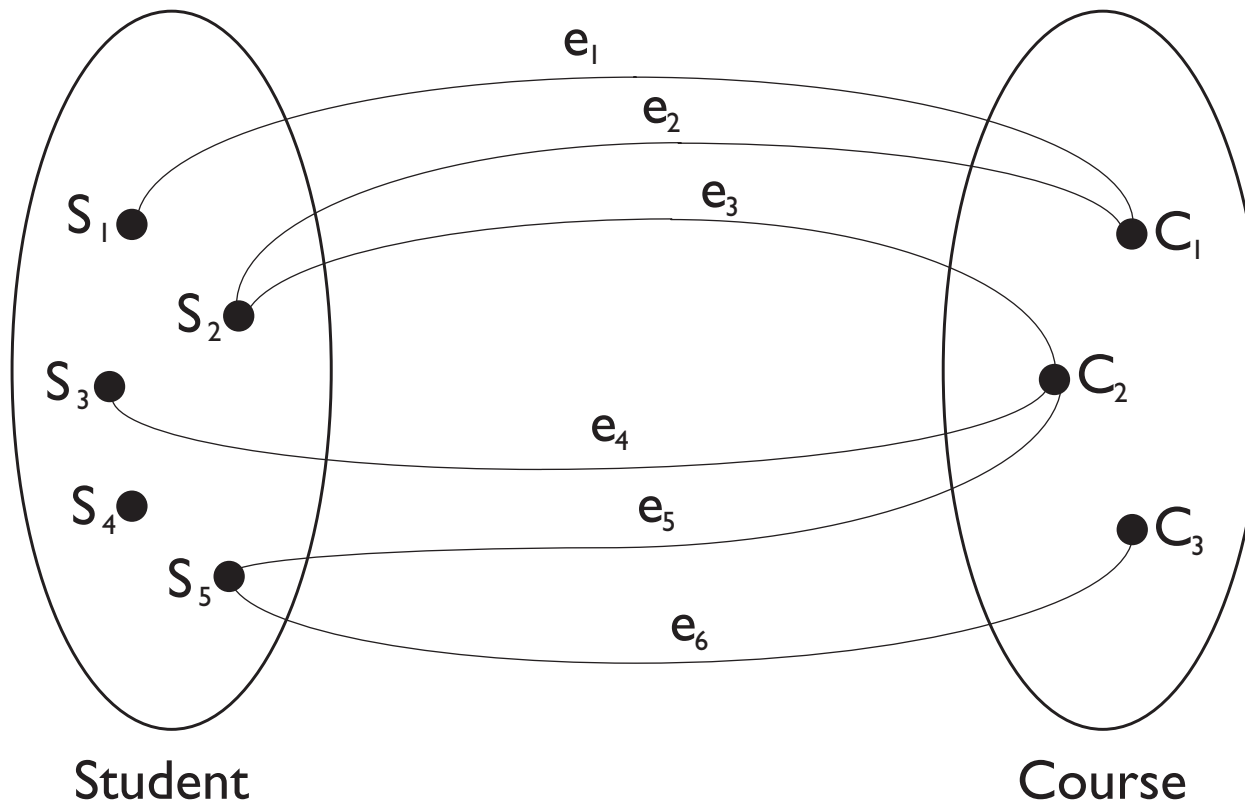
The constructs of the E-R model and their graphical representation

Construct	Graphical representation
Entity	
Relationship	
Simple attribute	
Composite attribute	
Cardinality of a	
Cardinality of an attribute	
Internal identifier	
External identifier	
Generalization	
Subset	

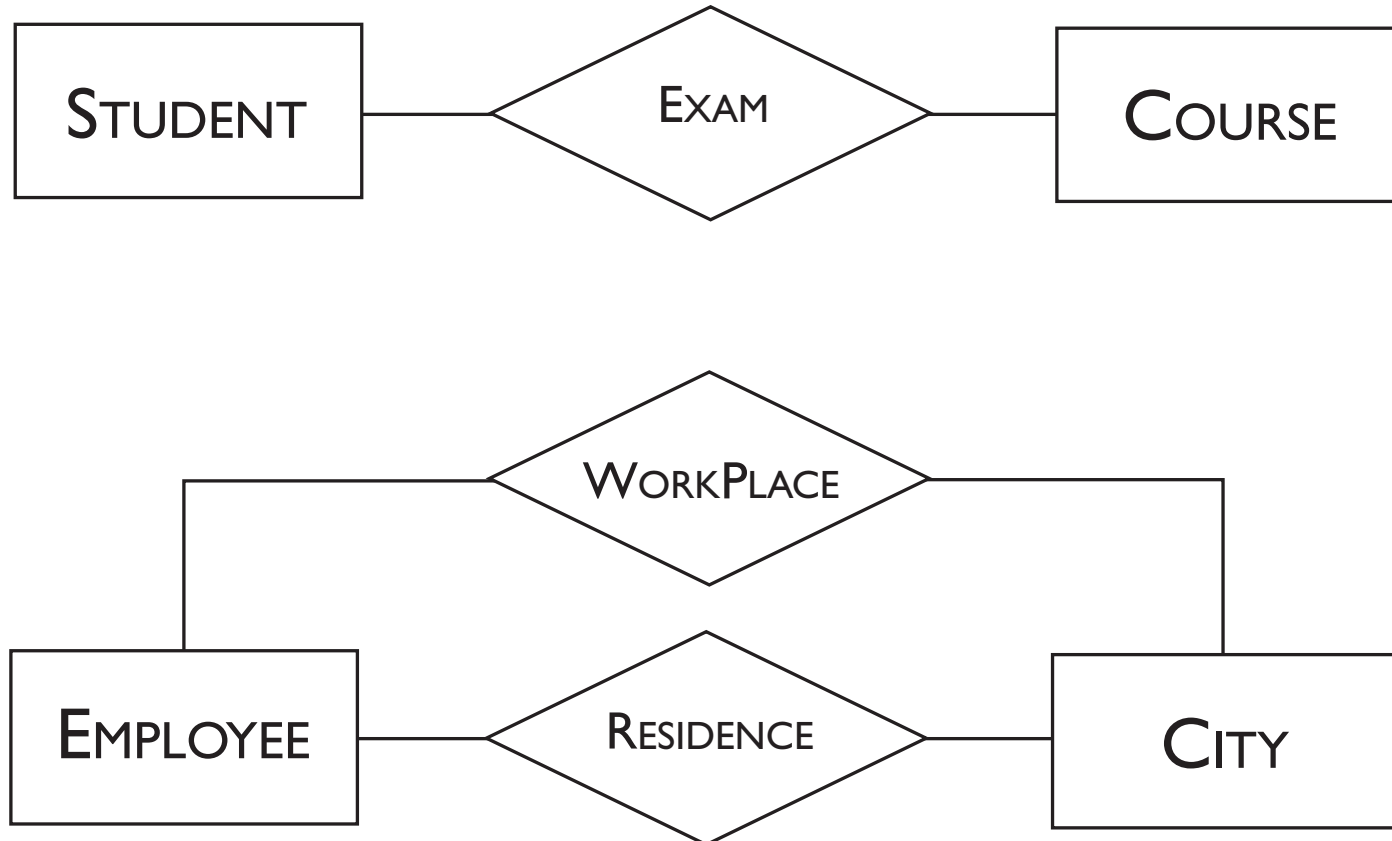
Examples of entity of the E-R model



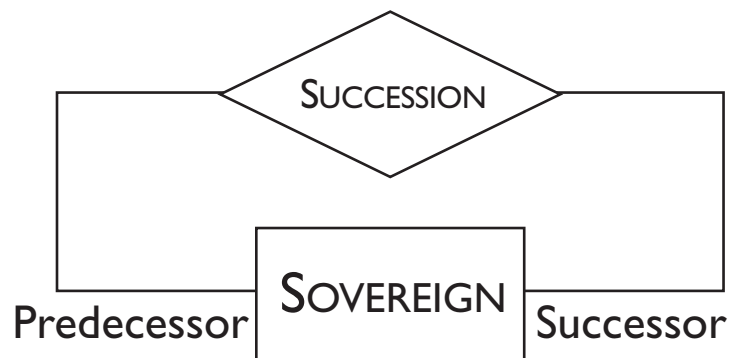
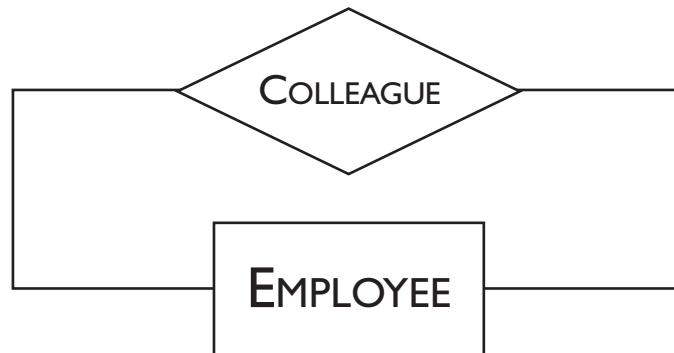
Example of occurrences of the EXAM relationship



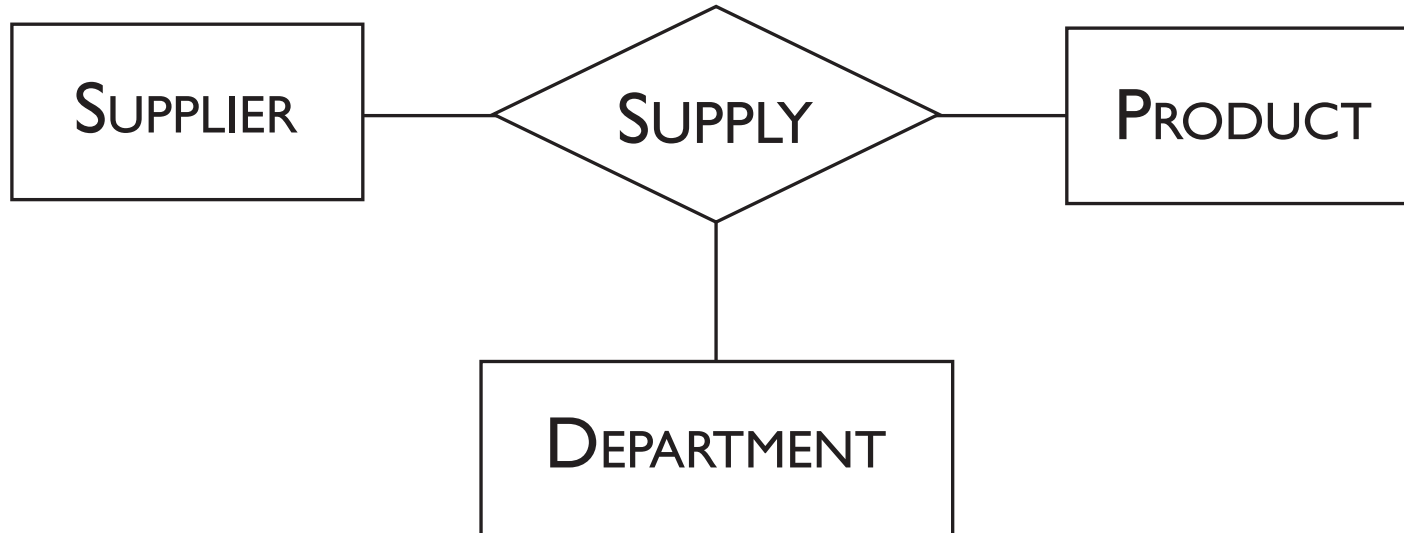
Examples of relationships in the E-R model



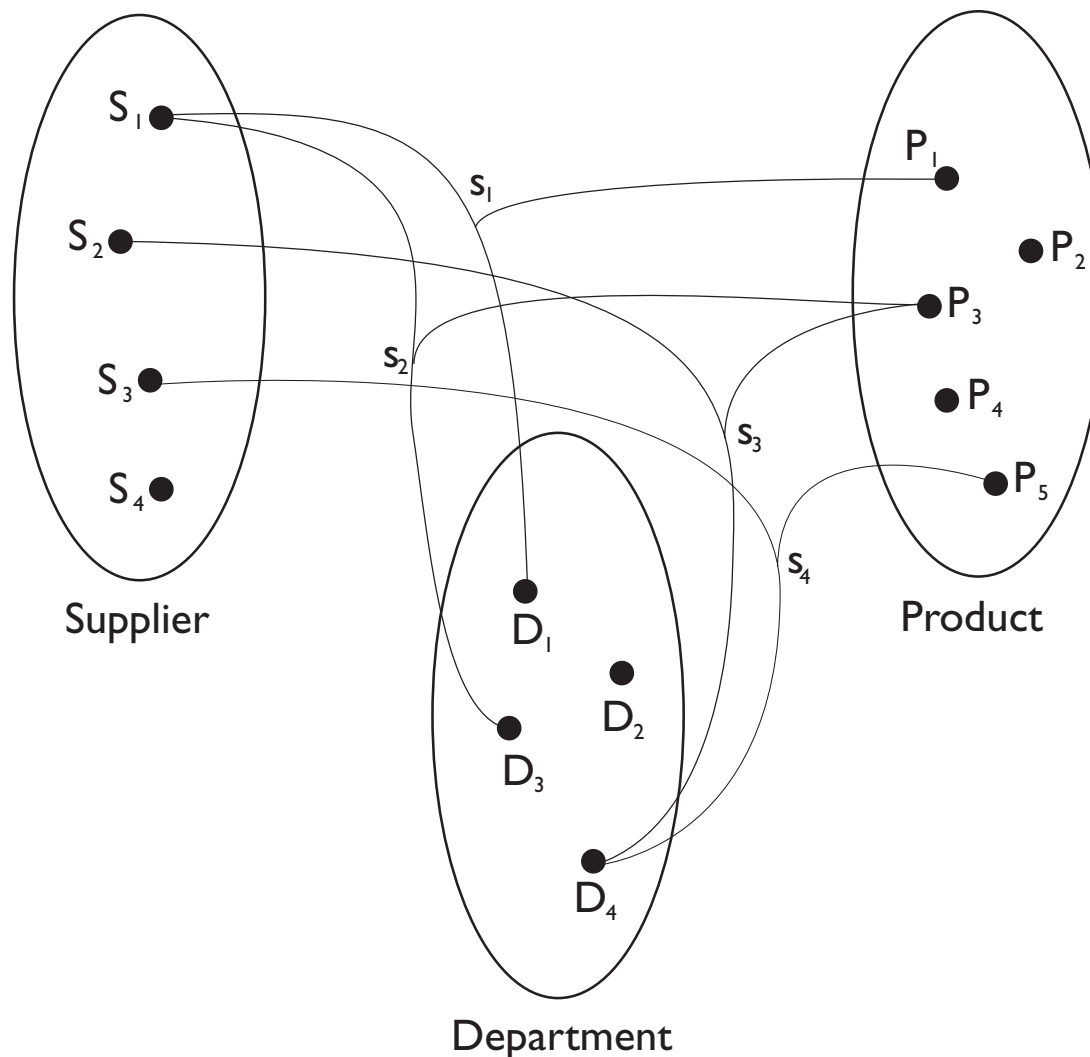
Examples of recursive relationships in the E-R model



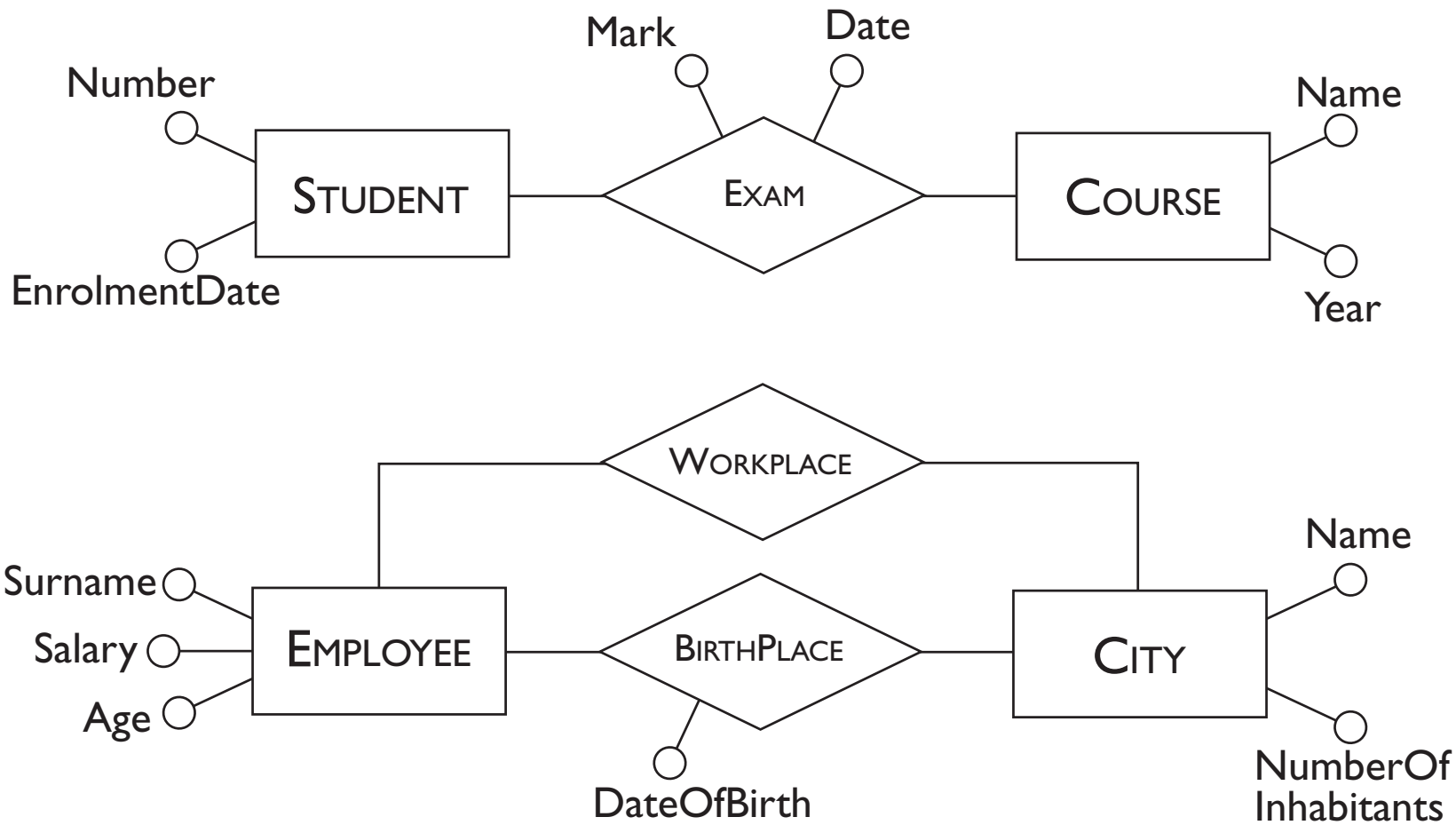
Example of a ternary relationship in the E-R model



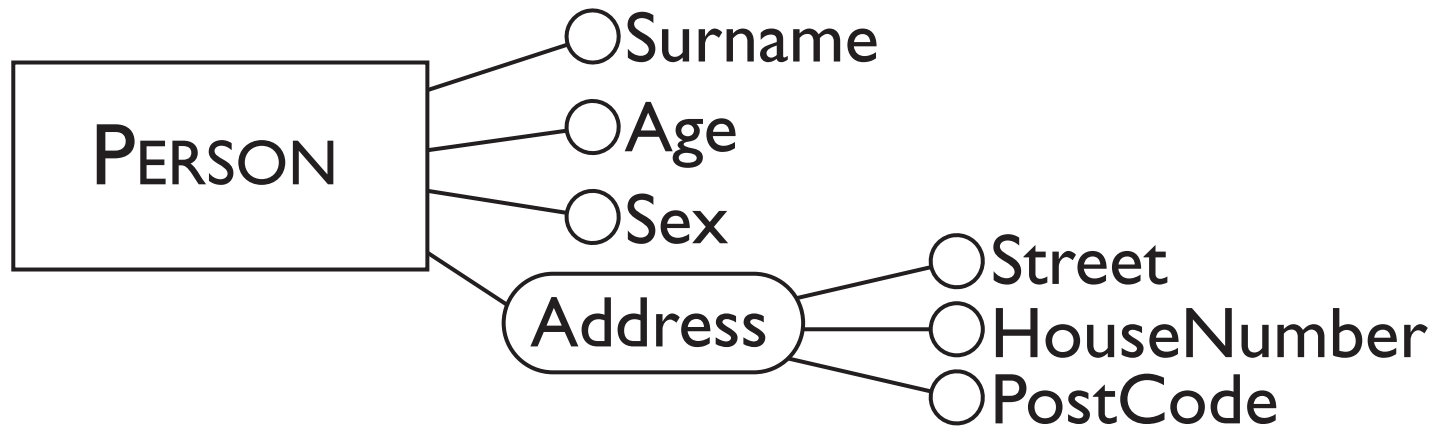
Example of occurrences of the SUPPLY relationship



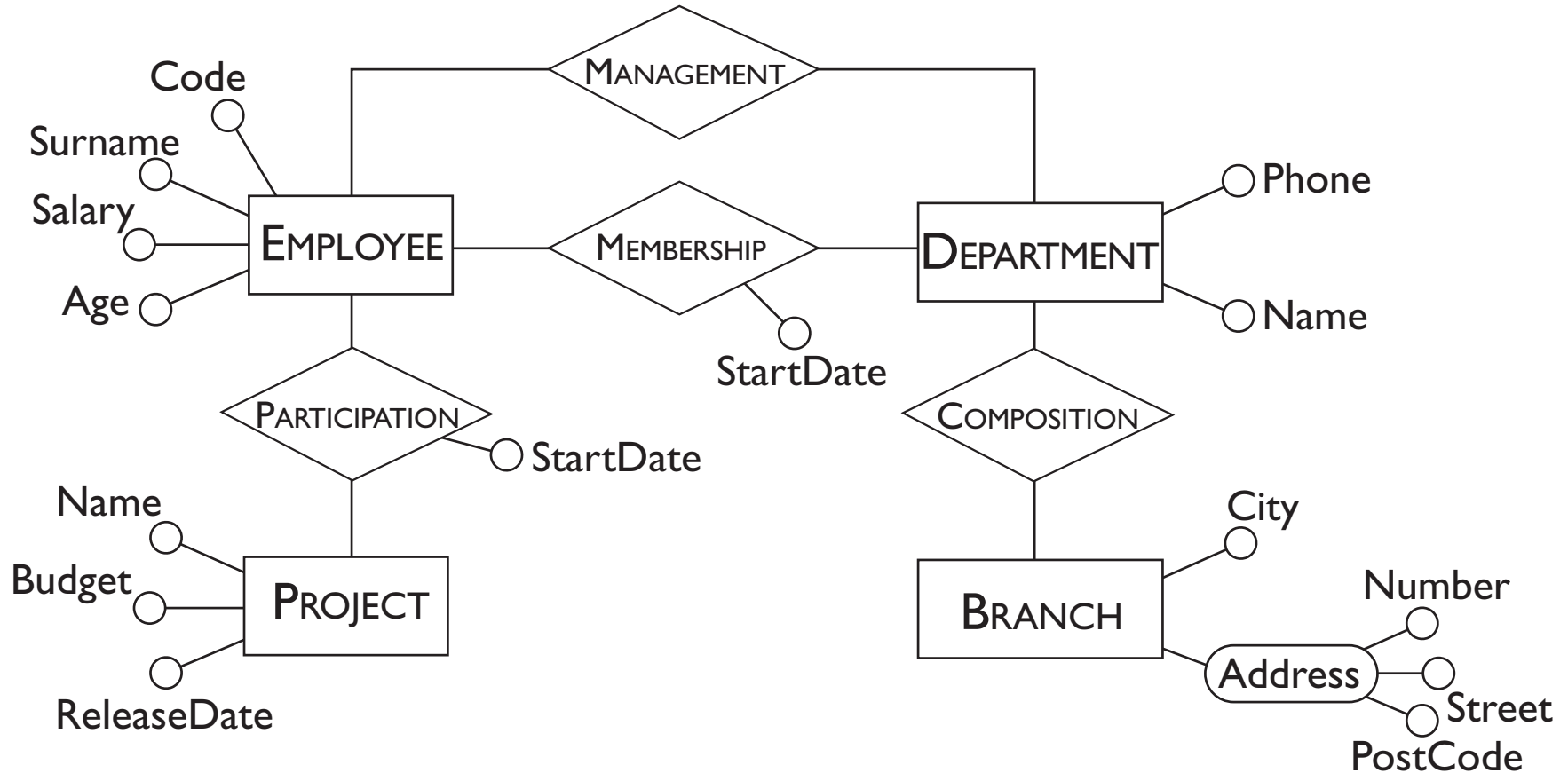
E-R schemas with relationships, entities and attributes



An example of an entity with a composite attribute



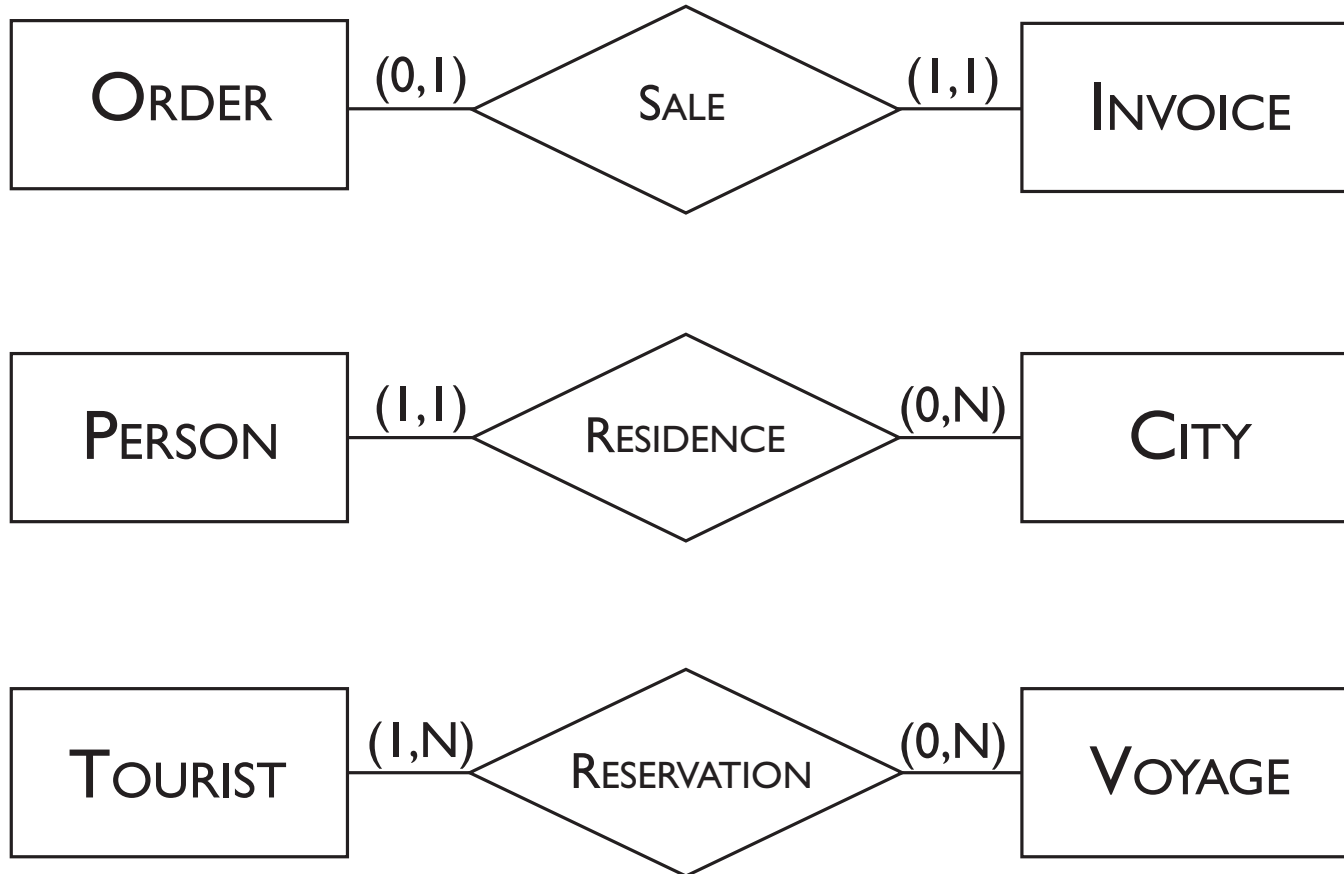
An Entity-Relationship schema



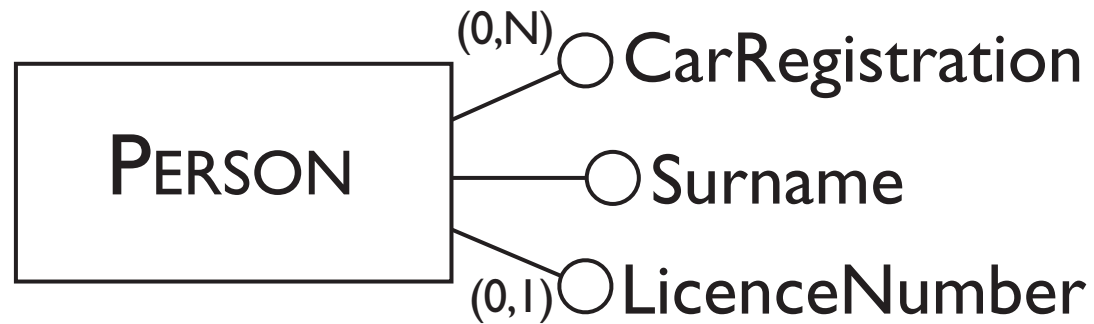
Cardinality of a relationship in the E-R model



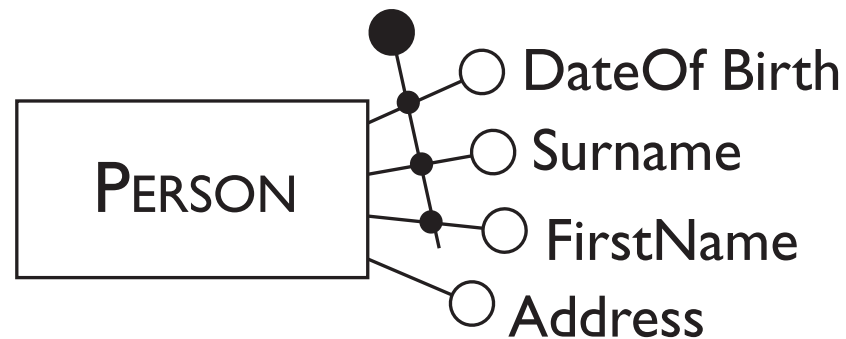
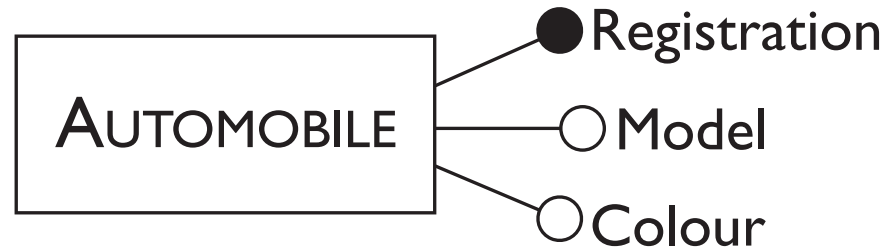
Examples of cardinality of relationships



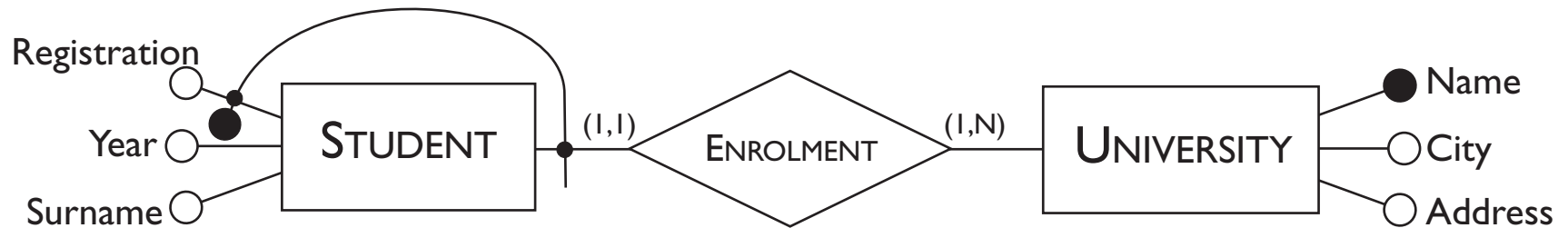
Example of entity attributes with cardinality



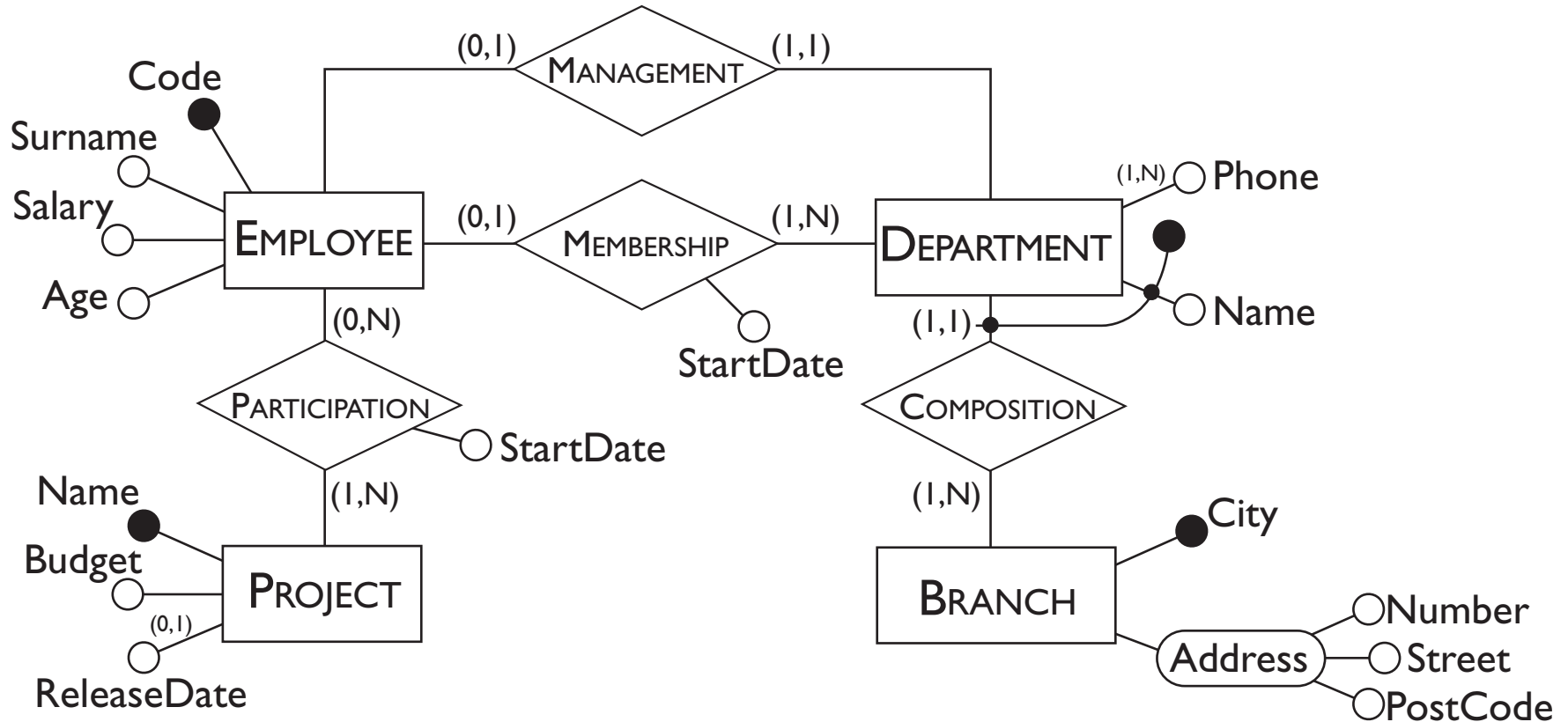
Examples of internal and external identifiers



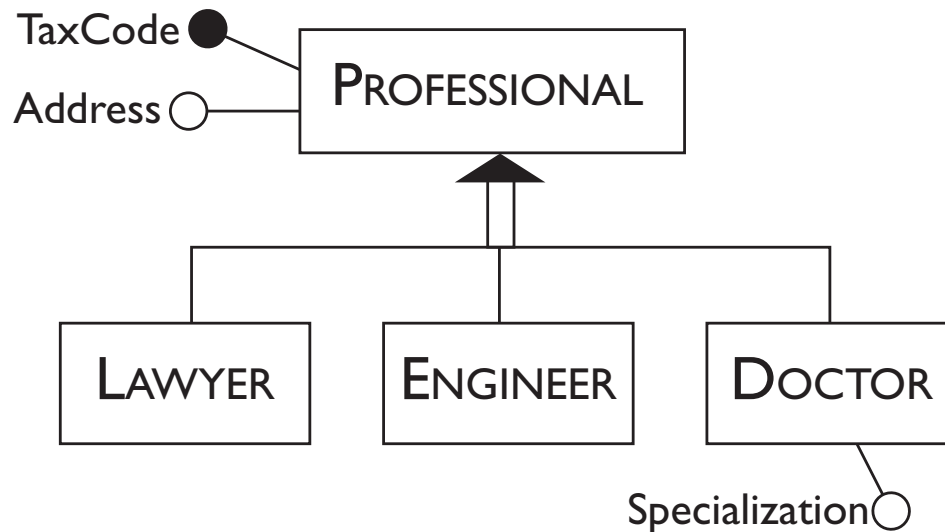
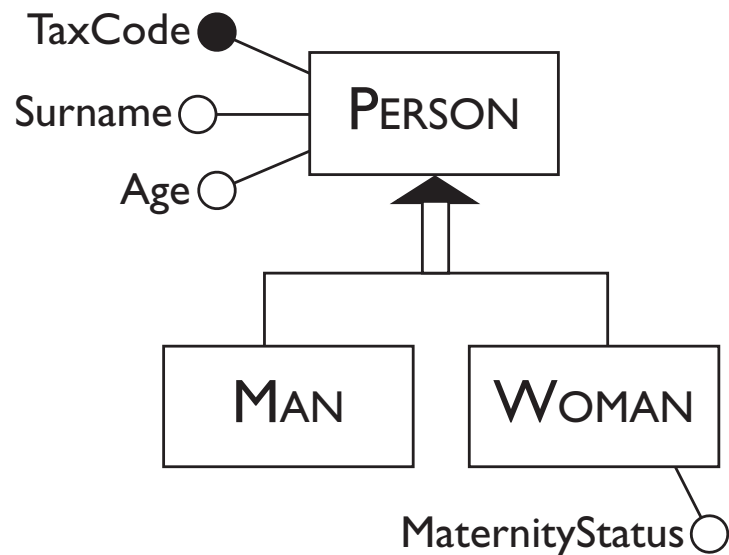
Example of an external entity identifier



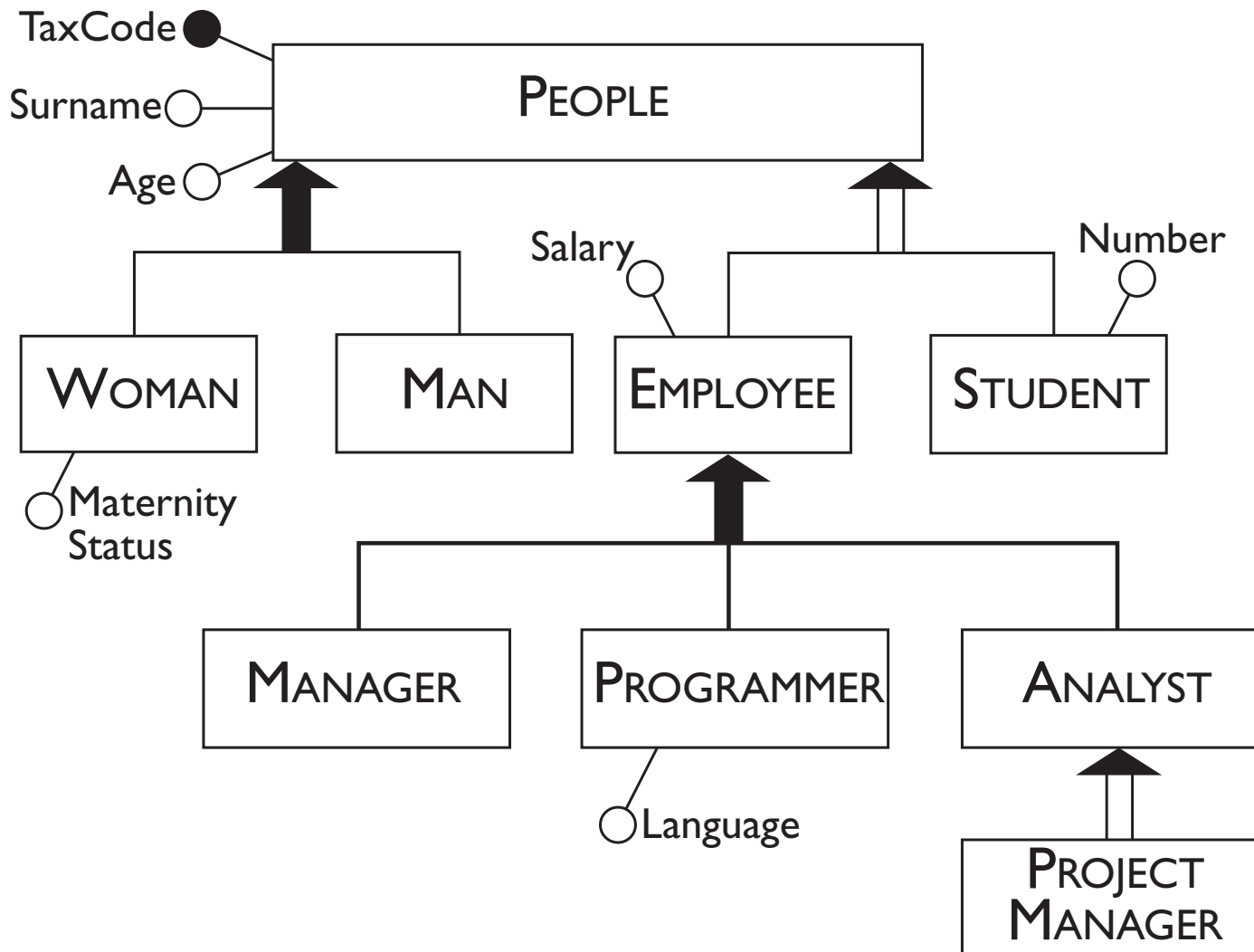
A schema completed by identifiers and cardinality



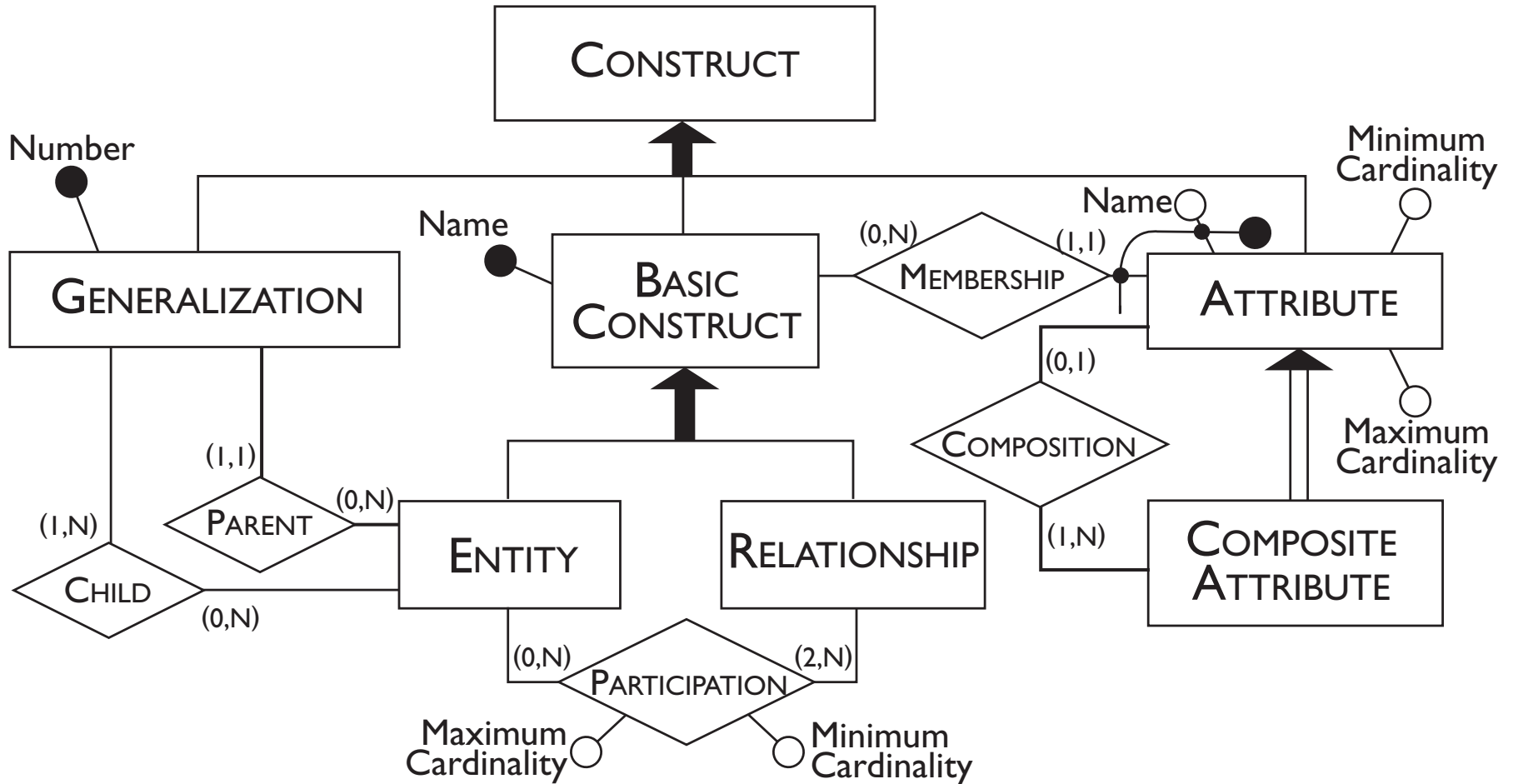
Examples of generalizations among entities



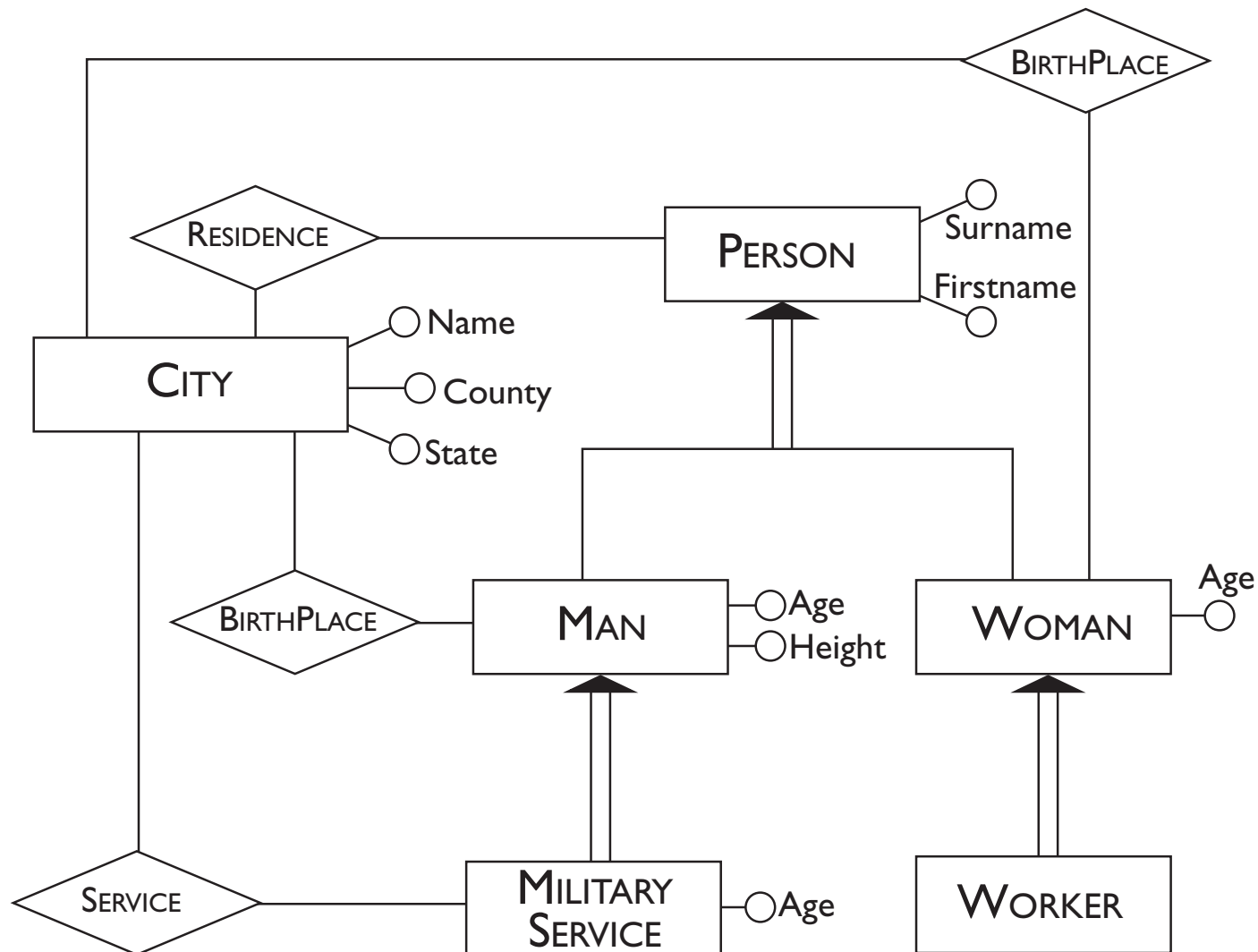
Hierarchy of generalizations between entities



Description of the E-R model using the E-R model



An E-R schema with a few imprecisions



Schema E-R for Exercise 5.6

